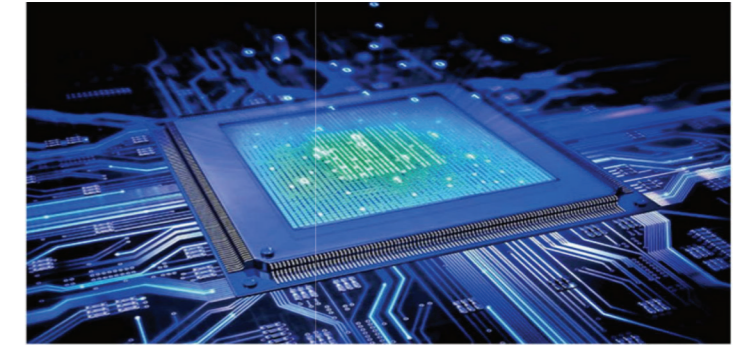




Up till now, we have won 94 patents (16 inventions, 45 utility models, 15 industrial design, 3 software copyright). And we have achieved ISO9001 Quality System certification and ISO10012-1 Measurement System Certification.



The performance-upgraded control system adopts a high performance 32-bit DSP processor, which has strong anti-interference ability to comprehensively improve the system's response speed and reliability.



## GREETINGS

FUJI INDUSTRY ELEVATOR CO., LTD. is an international enterprise. Our company has been involved in the global industrial industry for more than 60 years and is committed to the development of core products and technologies of industrial fields.

Over the years, we have deepened our cooperation with global regions and have established branches or agents around the world to provide our customers with perfect products and efficient service. To further strengthen our global supply chain and manufacturing capabilities, we have established state-of-the-art production plants in key strategic locations, including China and Thailand. Our facility in China leverages the robust regional supply chain and advanced infrastructure to serve the vast Asian market, while our plant in Thailand focuses on specialized production, benefiting from its strategic position in Southeast Asia. Both plants operate under our unified global standards for quality, efficiency, and sustainability, ensuring that every product meets the high expectations of our international clientele.

With our pursuit of industrial innovation and accumulated experience for a long time, we have contributed our strength to the global industrial industry, deepened mutual cooperation among industrial chains, provided comprehensive technical guidance and support, and become a reliable enterprise for all customers in various fields.

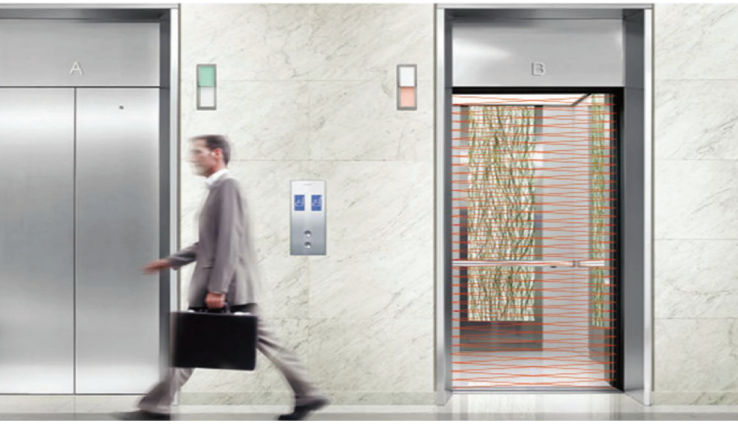


The research and development of this technology is still representing the trend of future development of the elevator industry. Machines using this technology do not need excitation and have small starting currents but extremely high transmission efficiency and more reasonable structures compared with traditional traction machines, they have higher efficiency, lower noise, and better environmental and energy-saving performance. They significantly reduce the cost by saving up to more than 30% of energy.



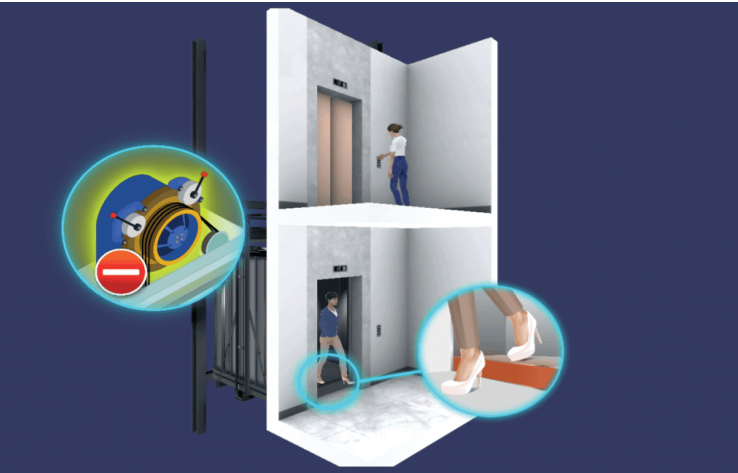
Otani Notake

President



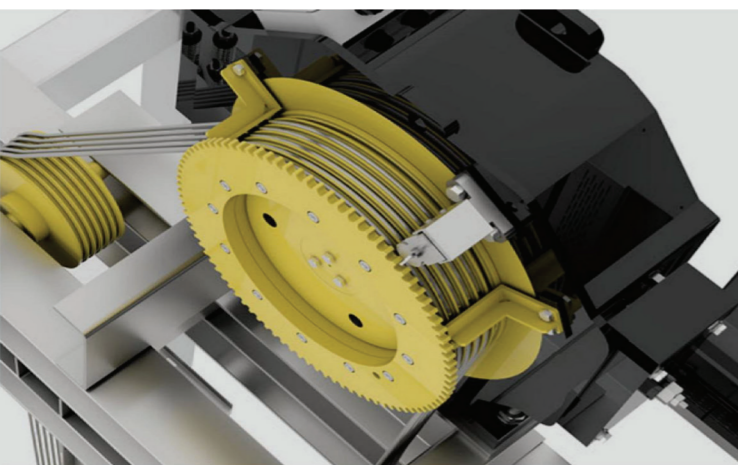
## Intelligent Light Curtain Protection

The high-beam light curtain system is sensitive, efficient and accurate. It can automatically detect the fault location while ensuring personal safety, providing a basis for quickly solving the light curtain problem.



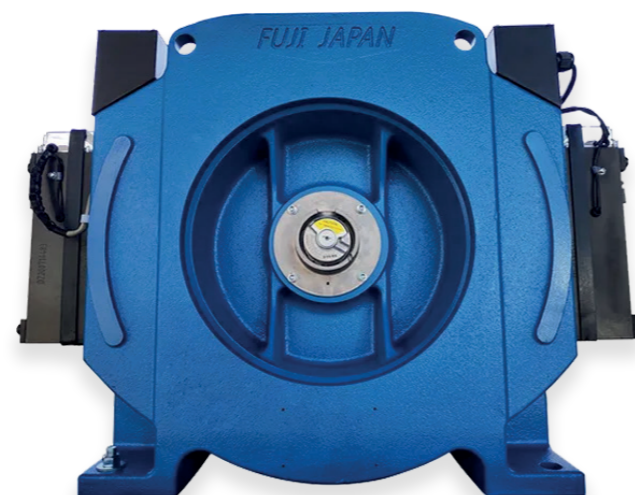
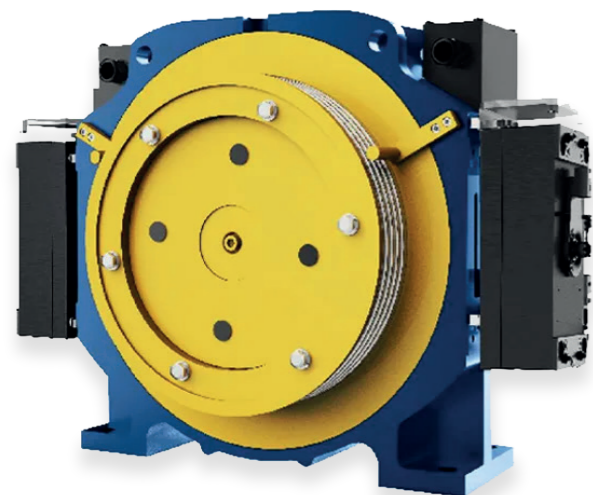
## UCMP Protection System

When the elevator is in the leveling position and the door is opened, if there is an accidental movement, the UCMP protection device will immediately start to make the elevator stop safely to prevent accidents.



## PMS Gearless Traction Machine

The new generation permanent magnet synchronous traction machine (gearless machine) exceeds national standard requirements for both braking torque and load capacity, ensuring exceptional elevator operational reliability and safety.



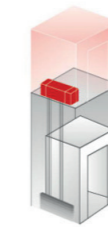
# OPTIMIZE SPACE & INCREASE VALUE

## Small machine room elevator High-efficient use with small space for free travel

- Make efficient use of space to improve building quality
- Simplify the installation process and shorten the installation
- Reasonably communicate design to reduce energy consumption

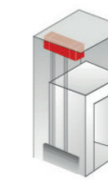
## Machine roomless elevator Unlimited possibilities

- No need to set up a host machine room, which greatly saves construction costs
- Optimize the building space and provide more possibilities for architectural design
- No need to reserve complex holes, and the civil construction requirements are simpler



**10%**

It saves 10% of the building area.

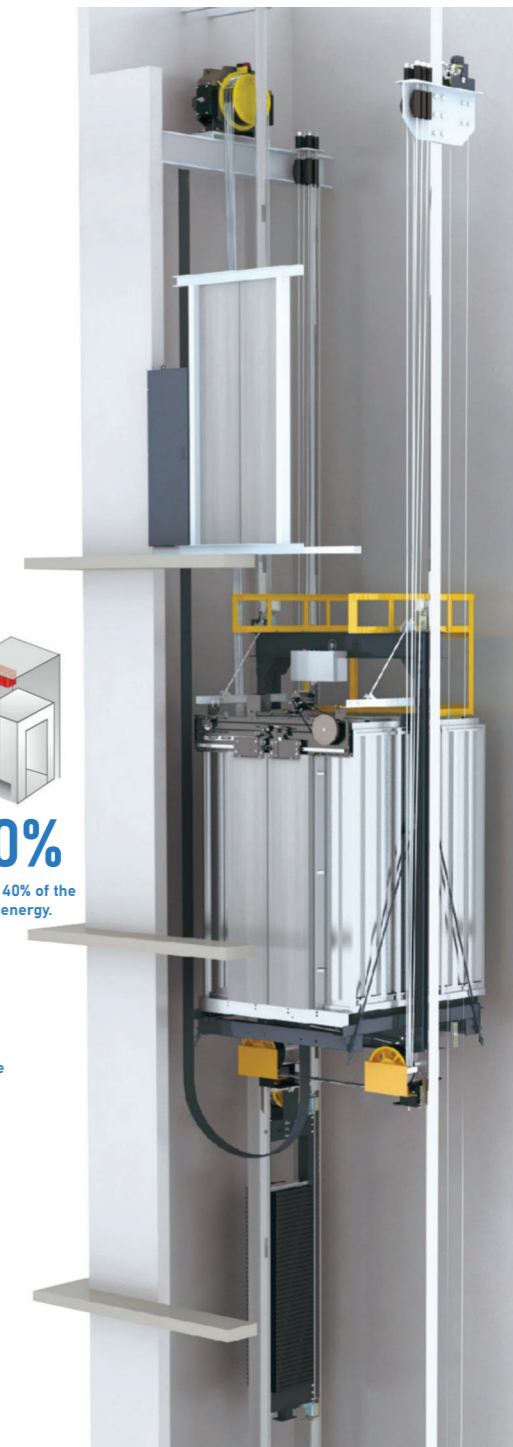


**40%**

It saves 40% of the electric energy.

**25%**

It enhances 25% of the efficiency



# Passenger Elevator

## Standard Cabin Configuration



### C01 Standard Cabin

Ceiling : Hairline stainless steel, acrylic board, LED energy saving lamp (T-01)  
 Car wall : Hairline stainless steel, rear wall mirror etching  
 Handrail: None  
 Floor : Marble floor(D-01)

## COP & LOP (Standard)

### COP Design

COP-01  
 Surface : Hairline steel plate  
 Display : 7-inch picture machine

### LOP Design

LOP-01  
 Surface : Hairline steel plate  
 Display : 4.3' Segment Code LCD

### Landing Door (Standard)



COP-01

Intergrated COP



Fire Switch



LOP-01

Without bottom case



L-01

GF Landing door hairline stainless steel, other doors painted steel.



## <C02

Ceiling : Stainless steel plate, acrylic transparent panel, energy-efficient LED lighting (T-02)  
 Car wall : Hairline stainless steel, mirror etching  
 Handrail : Hairline stainless steel (F-01)  
 Floor : Marble floor(D-01)



## C03>

Ceiling :Stainless steel plate, acrylic transparent panel, energy- efficient LED lighting (T-02)  
 Car wall : Hairline stainless steel, mirror etching  
 Handrail : Hairline St.St(F01)  
 Floor : Marble floor(D-01)



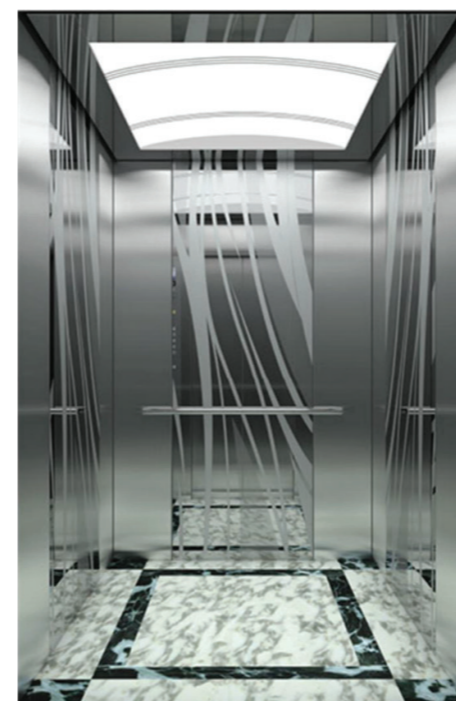
## <C04

Ceiling : Hairline stainless steel with acrylic photic board  
 Car wall : Hairline St.St  
 Handrail : None  
 Floor : PVC (standard), Marble (Optional)



## C05>

Ceiling : Stainless steel plate, acrylic transparent lights with soft illumination design  
 Car wall : Hairline stainless steel and mirror etching  
 Handrail : None  
 Floor : Marble floor(D-01)



## <C06

Ceiling : Stainless steel plate, acrylic lighting  
 Car wall : Hairline stainless steel, mirror etching St.St  
 Handrail : Hairline St.St single round tube (F-01)  
 Floor : Marble floor(D-01)



## C07>

Ceiling : Mirror St.St framework, acrylic arch paint jet top plate & acrylic lightings  
 Car wall : Hairline stainless steel, mirror etching  
 Handrail : None  
 Floor : PVC or marble



## <C08

Ceiling : Mirror stainless steel, acrylic transparent-board, LED lights  
 Car Wall : Mirror etched stainless steel for center plate, auxiliary hairline stainless steel  
 Handrail : None  
 Floor : PVC(Standard)



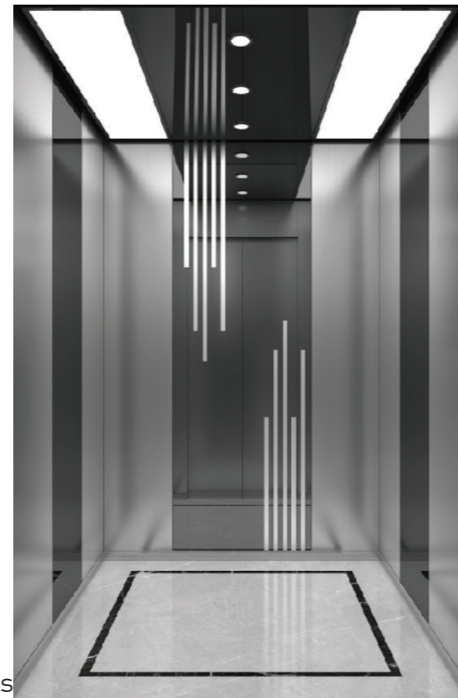
## C09>

Ceiling : Hairline stainless steel, acrylic lighting, LED lights  
 Car wall : Hairline stainless steel, mirror etching  
 Handrail : Hairline St.St single round tube  
 Floor : Marble floor(D-01)



## <C10

Ceiling : Mirror stainless steel plate, acrylic lightings  
 Car wall : Hairline St.St & mirror etching on three walls  
 Handrail : Titanium gold single round tube  
 Floor : PVC (Standard)



## C11>

Ceiling: Mirror St.St, acrylic transparent plate, LED lights  
 Cabin Wall: Black titanium mirror etched St.St, hairline St.St, black titanium mirror plate  
 Handrail: None  
 Floor: PVC(Standard)



## <C14

Ceiling : Mirror stainless steel, acrylic transparent board, LED lights  
 Cabin Wall : Mirror etched stainless steel, auxiliary hairline Stainless steel  
 Handrail : None  
 Floor: PVC(Standard), Marble(Optional)



## C15>

Ceiling : Mirror stainless steel & spot light  
 Car wall : Hairline stainless steel & mirror etching  
 Handrail : Hairline St.St single round tube  
 Floor : PVC



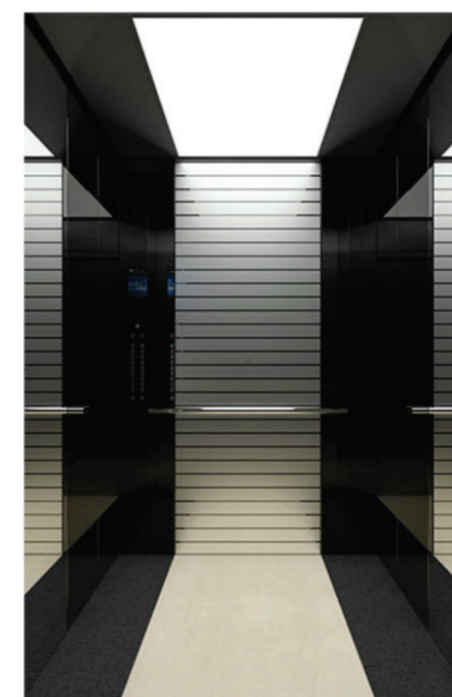
## <C12

Ceiling: Hairline stainless steel, LED Lights  
 Car wall: Mirror etching & Hairline St.St  
 Handrail: Hairline St.St flat  
 Floor: PVC (standard)



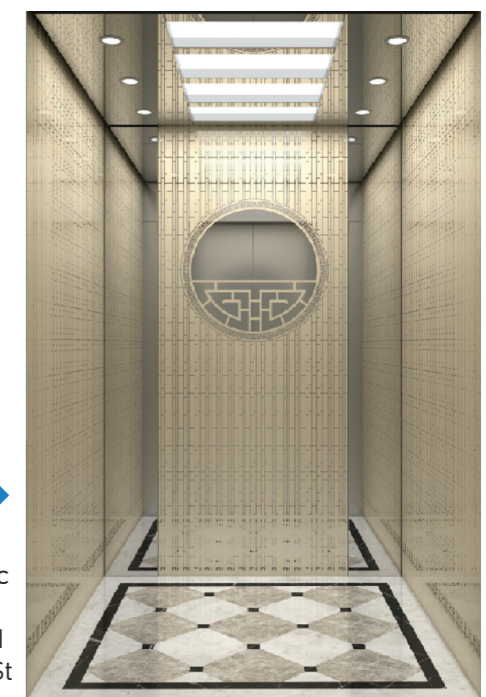
## C13>

Ceiling : Stainless steel plate, acrylic soft lighting  
 Car wall : Hairline stainless steel & mirror etching  
 Handrail : None  
 Floor : PVC (Standard)



## <C16

Ceiling : Black titanium St.St frame, acrylic light-passing board  
 Car Wall : Mirror, black titanium mirror St.St, mirror etching  
 Handrail : Stainless steel round single tube  
 Floor : PVC floor



## C17>

Ceiling : Mirror St.St, acrylic LED lights  
 Car Wall : Champagne gold sprayed mirror etching St.St & mirror, auxiliary panels are champagne gold sprayed mirror etching St.St  
 Handrail : None  
 Floor : PVC(Standard)

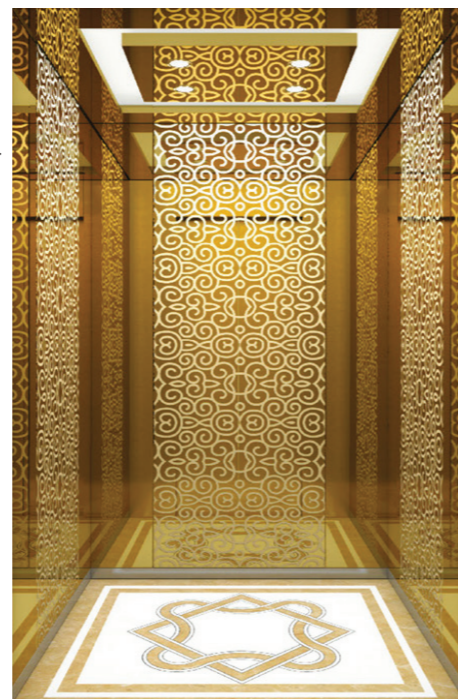


## <C18

Ceiling : Titanium gold mirror frame, downlight, middle white transparent plate  
 Car wall : Titanium gold mirror etching, titanium gold hairline stainless steel  
 Handrail : Titanium gold hairline flat handrail  
 Floor : PVC

## C19>

Ceiling : Titanium gold mirror St.St, acrylic lighting, LED lighting  
 Car wall : Titanium gold mirror etched St.St  
 Handrail : None  
 Floor : PVC (Standard)

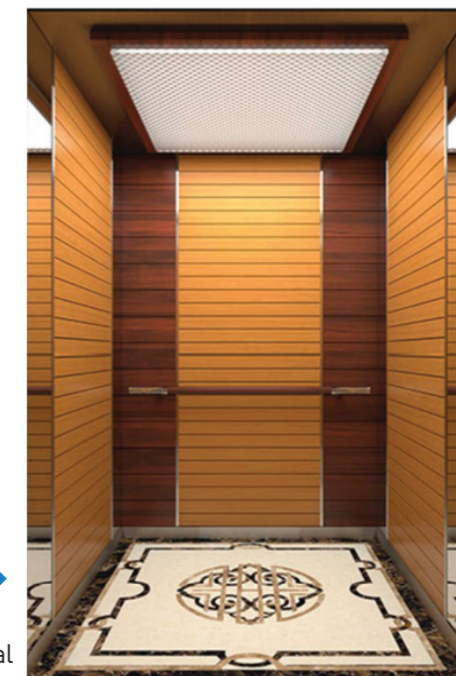


## <C22

Ceiling : Bronze mirror frame, white transparent plate  
 Car wall : Walnut wood veneers, bronze brushed etched  
 Handrail : Bronze stainless steel single tube  
 Floor : PVC

## C23>

Ceiling : St.St frame, central shape top board  
 Car wall : Hairline St.St, wood panels, mirror edge  
 Handrail : St.St rose gold single round tube  
 Floor : PVC



## <C20

Ceiling : Metal frame with baking paint & hidden lights, mirror etched ceiling with metal frame of baking paint  
 Car wall : wood plate in the middle with serpeggiante decorations on both sides, mirror stainless steel  
 Handrail : Titanium gold single round tube  
 Floor : Serpeggiante floor

## C21>

Ceiling : Titanium mirror St.St, middle white transparent board  
 Car wall : Titanium hairline St.St & mirror etched  
 Handrail : Titanium rose gold single round tube  
 Floor : Marble parquet floor



## <C24

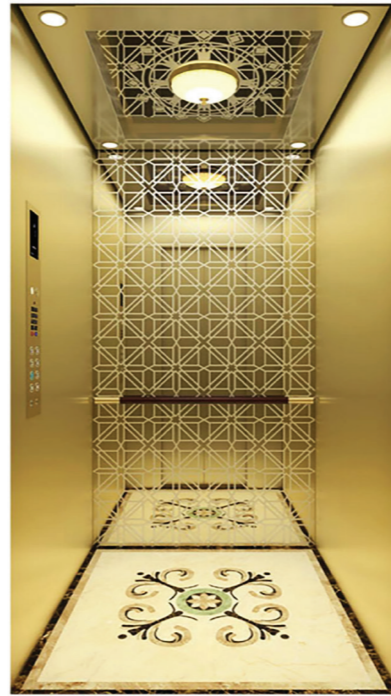
Ceiling : Rose gold stainless steel, acrylic lighting, LED light  
 Car wall : Mirrored, sandblasted, rose gold.  
 Handrail : None  
 Floor : PVC (standard), Marble (Optional)

## C25>

Ceiling : Hairline St.St plated titanium bronze + mirror finished stainless plated in titanium bronze+ LED light + hidden lamp  
 Car wall : Hairline St.St plated in titanium bronze + mirror finished St.St plated in titanium bronze + etched mirror St.St plated in titanium bronze  
 Handrail : St.St flat tube  
 Floor : Parquet stone



# Home Elevator



## <V01

Ceiling : Stainless steel frame (champagne gold), mirror etching (champagne gold), absorb domelight LED lighting  
 Car wall : Champagne gold sandblasted stainless steel, mirror etching stainless steel  
 Handrail : Champagne stainless steel and solidwood combination  
 Floor : PVC



## V02>

Ceiling : Decorated with down light that has rose gold pattern hairline stainless steel frame, rose gold mirror surface stainless steel plate in middle and LED light belt surround the middle  
 Car wall : Rose gold pattern hairline stainless steel in the left and right, and combined with rose gold pattern hairline stainless steel with rose gold mirror surface etching stainless steel in the back wall  
 Floor : PVC



## <V03

Ceiling : Steel plate spraying, bronze sandblasted stainless steel, LED light  
 Cabin Wall : Fish belly white rock plate on both sides of wood veneer titanium stainless steel & wooden finish  
 Handrail : Wooden handrail  
 Floor : Marble



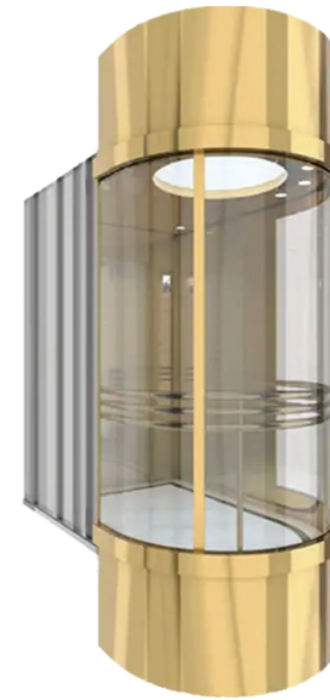
## V04>

Ceiling : Steel plate spraying  
 Cabin Wall : Safety laminated glass, side wall is stainless steel + Safety laminated glass + Aluminum alloy  
 Floor : PVC

# View The Scene In 360 Degree

## Panoramic Elevator

Panoramic elevator in FUJI Industry Elevator Company integrates aesthetics, taste and comfort, creating a landscape in the urban architectural with a panoramic design



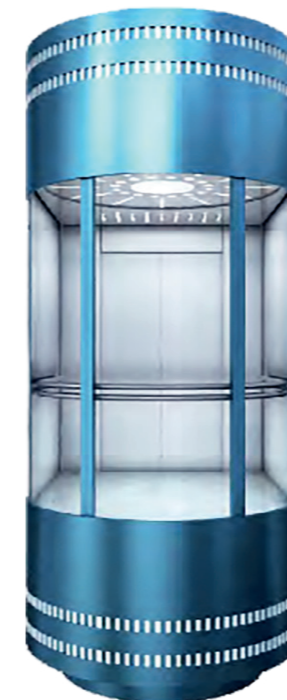
### <S01

Upper/lower hood : Titanium golden mirror St.St  
 Observation wall : Laminated glass  
 Ceiling : Titanium gold mirror stainless steel + acrylic+ LED downlights  
 Car wall : Titanium gold mirror stainless steel  
 Handrail : Titanium gold mirror St.St round triplex  
 Floor : PVC



### S02>

Upper/Lower Cover : Steel plate paint outsourcing titanium blonde pattern St.St  
 Observation Wall : Safety laminated glass  
 Decoration Ceiling : Hair grain St.St, acrylic lighting  
 Cabin Wall : Stainless steel  
 Handrail : Stainless steel round tube  
 Floor : PVC (Standard)



### <S03

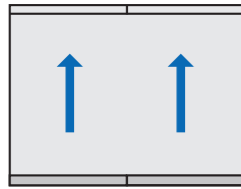
Upper/Lower Cover : Steel plate paint, lighting  
 Observation Wall : Safety laminated glass  
 Decoration Ceiling : Steel plate paint top, ivory acrylic lighting  
 Cabin Wall : Stainless steel  
 Handrail : Stainless steel double pipe  
 Floor : PVC (Standard)



### S04>

Upper/Lower Cover : Hairline SS  
 Observation Wall : Safety laminated glass  
 Decoration Ceiling : Mirror stainless steel, LED panel  
 Cabin Wall : Hairline stainless steel  
 Handrail : Stainless steel flat  
 Floor : PVC (Standard), Marble (Optional)

# Hospital Bed Elevator



Opposite Door Type



Center Opening Type



Slide Opening Type



## H01

Ceiling : Hairline stainless steel, LED lights  
 Cabin Wall : Hairline stainless steel  
 Cabin Door : Hairline stainless steel  
 Handrail : Stainless steel flat armrest  
 Floor : PVC, Marble (Optional)

# Car Elevator



## <C01

Ceiling : Painted steel  
 Ventilation : Circular fan  
 Cabin Wall : Painted steel  
 Cabin Door : Painted steel  
 Handrail : None  
 Floor : Chequered plate steel

# Freight Elevator



## <F01

Ceiling : Painted steel  
 Ventilation : Circular fan  
 Cabin Wall : Painted steel  
 Cabin Door : Painted steel  
 Handrail : None  
 Floor : Chequered plate steel

# Escalator Moving Walkway

Escalators are moving staircases designed to transport people between different levels of a building. They consist of a continuous loop of steps that move on tracks, powered by an electric motor.

Moving walks are motorized conveyor systems that transport people horizontally or on an incline over short to medium distances.



# COP & LOP (Optional)

## COP-02

Surface:  
Hairline stainless steel



### LOP-02A

Simplex



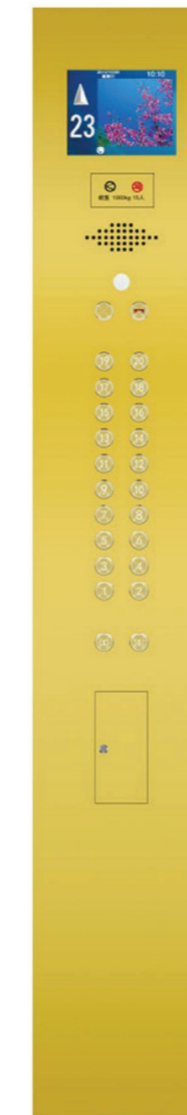
### LOP-02B

Duplex



## COP-03

Surface:  
Titanium gold stainless steel



### LOP-03A

Simplex



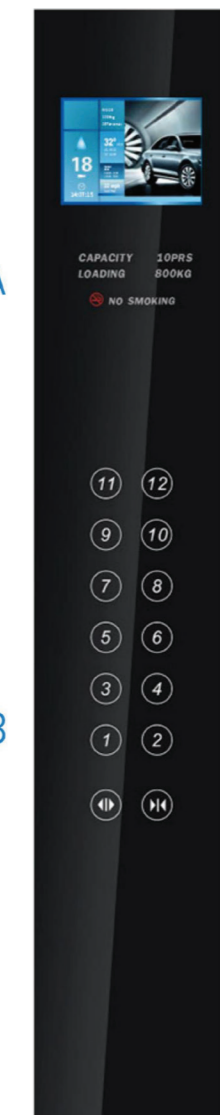
### LOP-03B

Duplex



## COP-04

Surface:  
Glass touch screen



### LOP-04A

Simplex



### LOP-04B

Duplex



# COP-05

Intergrated COP  
Surface:  
Hairline stainless steel



LOP-05A  
Simplex



LOP-05B  
Duplex



## Display (Optional)

- XS01** 10.4inch picture display
- XS02** 10.4inch video display
- XS03** 7inch picture display
- XS04** 9.7inch picture display



## Button (Optional)

- B01** Ultrathin bottomless box Button with braille
- B02** Zinc alloy Round button
- B03** Stainless steel Nail type button
- B04** Transparent resin Square button

## Horizontal Hall Display (Optional)

- HX01** [Image: Horizontal display showing floor 2 with an up arrow]
- HX02** [Image: Horizontal display showing floor 20 with a down arrow]
- HX03** [Image: Horizontal display showing floor 3 with an up arrow]
- HX04** [Image: Horizontal display showing floor 25 with an up arrow]

# Optional Decoration

## Ceiling series (Optional)



**T04**  
Mirror stainless steel  
Energy saving lamp



**T11**  
Mirror stainless steel frame  
Acrylic soft light illumination design



**T12**  
Mirror stainless steel frame  
Acrylic soft light illumination design  
Four side downlight



**T13**  
Hairline stainless steel frame  
Acrylic LED downlight



**T14**  
Mirror stainless steel frame  
Middle image line light-transmitting plate



**T15**  
Hairline stainless steel frame  
Acrylic LED downlight



**T16**  
Stainless steel frame  
Acrylic LED downlight



**T17**  
Stainless steel frame  
Acrylic



**T18**  
Ti-plated stainless steel frame with acrylic top panel  
Downlights

# Optional Decoration

## Landing Door series (Optional)

## Handrail series (Optional)



**F01** Stainless steel single pipe



**F02** Stainless steel double pipe



**F03** Stainless steel flat armrest



**F04** Titanium gold stainless steel single pipe



**F05** Titanium gold stainless steel double pipe



**F06** Solid wood, titanium stainless steel



**F07** Stainless steel tube model handrail



**F08** Stainless steel tube model handrail



**F09** Stainless steel tube model handrail



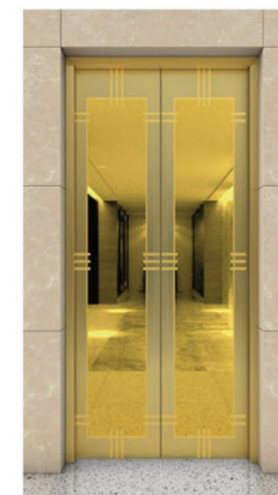
**L02**  
Mirror Etching



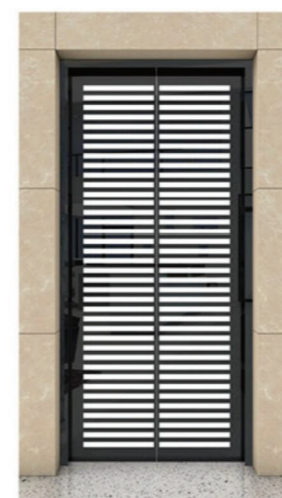
**L03**  
Hairline stainless steel Etching



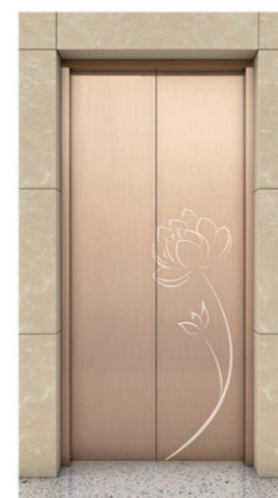
**L04**  
Hairline stainless steel Glass



**L05**  
Titanium, mirror, etching, Vibration finish



**L06**  
Black titanium mirror stainless steel Etching



**L07**  
Rose gold hairline stainless steel Etching



**L08**  
Hairline stainless steel Etching



**L09**  
Titanium mirror stainless steel Etching

# Construction Parameters

## Small Machine Room Type Passenger Elevator

### Floor series (PVC)



**D02**  
Standard



**D03**  
Optional



**D04**  
Optional



**D05**  
Optional

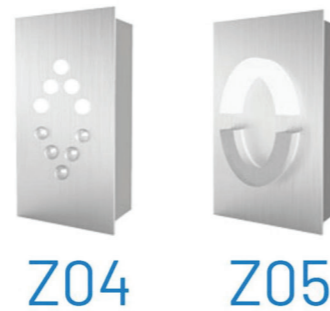


**D06**  
Optional

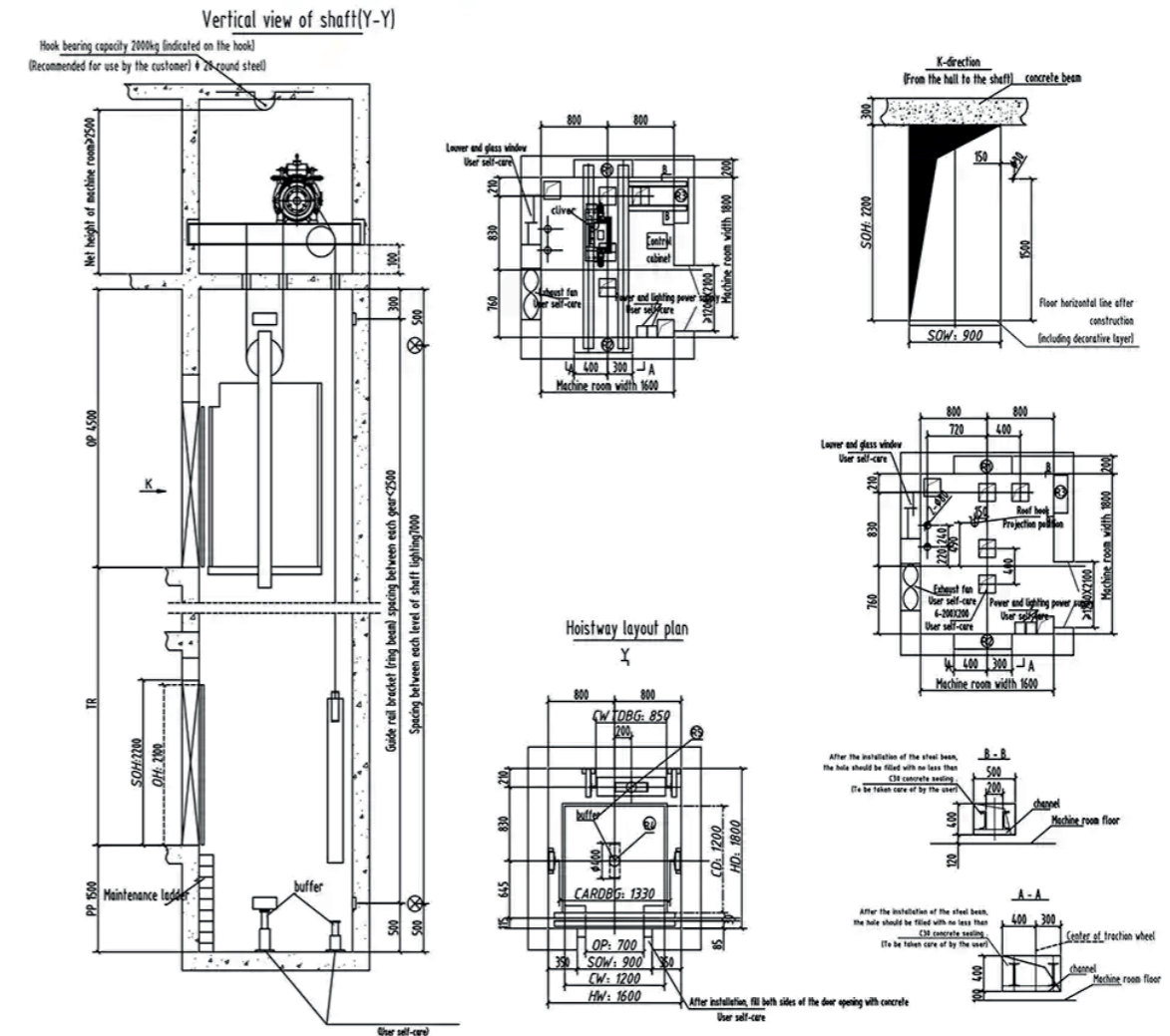


**D07**  
Optional

### Arival Light (PVC)



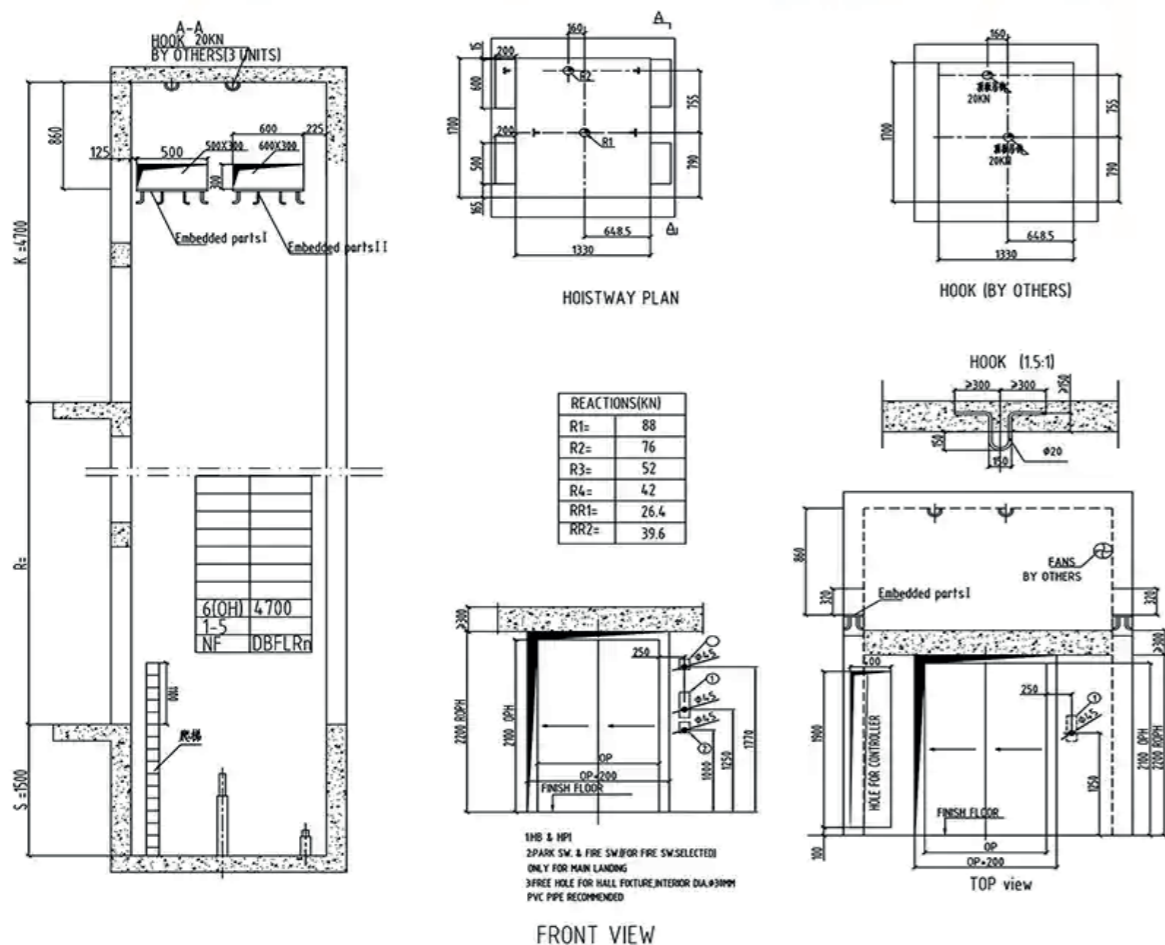
### Colors series



Load (kg)	Speed (m/s)	Net dimension of car (mm)					Net dimension of hoistway (mm)					Net dimension of machine room (mm)			Maximum floor	Maximum travelling (m)	
		Width	Depth	Height	Door open width	Door open height	Width	Depth	Gate width	Gate height	Pit	Over head	Width	Depth			Height
450	1.0	1100	1100	2500	700	2100	1600	1500	900	2200	1500	4300	1600	1500	2500	15	45
	1.0															20	60
630	1.5	1400	1100	2500	800	2100	1850	1700	1000	2200	1600	4500	1850	1700	2500	24	72
	1.75															30	90
	1.0															20	60
800	1.5	1400	1350	2500	800	2100	1850	1950	1000	2200	1600	4500	1850	1950	2500	24	72
	1.75															30	90
	1.0															20	60
1000	1.5	1600	1500	2500	900	2100	2050	2100	1100	2200	1600	4500	2050	2100	2500	24	72
	1.75															30	90
	1.0															20	60
1150	1.5	2000	1350	2500	1100	2100	2500	2100	1300	2200	1600	4650	2500	2100	2500	24	72
	1.75															30	90
	1.0															20	60
1350	1.5	2000	1500	2500	1100	2100	2500	2200	1300	2200	1600	4650	2500	2200	2500	24	72
	1.75															30	90
	1.0															20	60
1600	1.5	2000	1700	2500	1100	2100	2500	2400	1300	2200	1600	4650	2500	2400	2500	24	72
	1.75															30	90
	1.0															20	60

Note: Only for reference, final manufacture please follow contract.

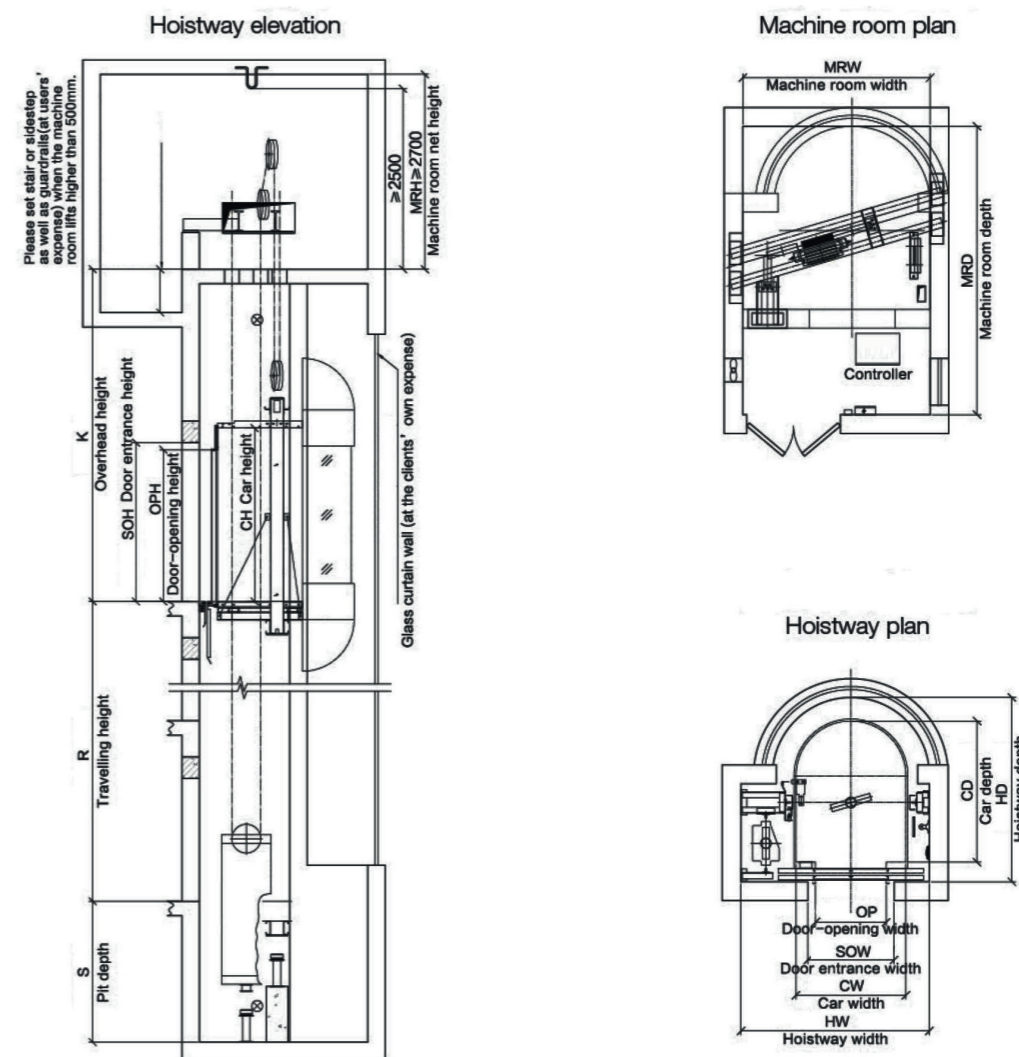
## Machine Room Less Type Passenger Elevator



Load (kg)	Speed (m/s)	Net dimension of car (mm)					Net dimension of hoistway (mm)				Maximum floor	Maximum travelling (m)
		Width	Depth	Height	Door open width	Door open height	Width	Depth	Pit	Overhead		
450	1.0	1100	1100	2500	700	2100	1900	1700	1500	4300	20	60
	1500						1300	1600	4500	30	80	
630	1.5	1100	1400	2500	800	2100	2000	1800	1600	4500	30	80
	1700						1700	1700	4600	36	80	
800	1.0	1400	1350	2500	900	2100	2200	1750	1500	4300	20	60
	1600						1500	1600	4500	30	80	
1000	1.5	1600	1500	2500	900	2100	2400	1900	1600	4500	30	80
	1700						1700	1700	4600	36	80	
1150	1.0	1600	1700	2500	1000	2100	2650	2200	1500	4300	20	60
	1600						1500	1600	4500	30	80	
1350	1.5	1700	1800	2500	1100	2100	2750	2250	1600	4450	20	60
	1650						1800	1600	4550	30	90	
1600	1.0	1700	2000	2500	1100	2100	2750	2400	1650	4600	36	105
	1600						2000	1600	4450	20	60	
2000	1.5	1900	2000	2500	1100	2100	2750	2400	1600	4550	30	90
	1650						2000	1650	4600	36	105	

Note: Only for reference, final manufacture please follow contract.

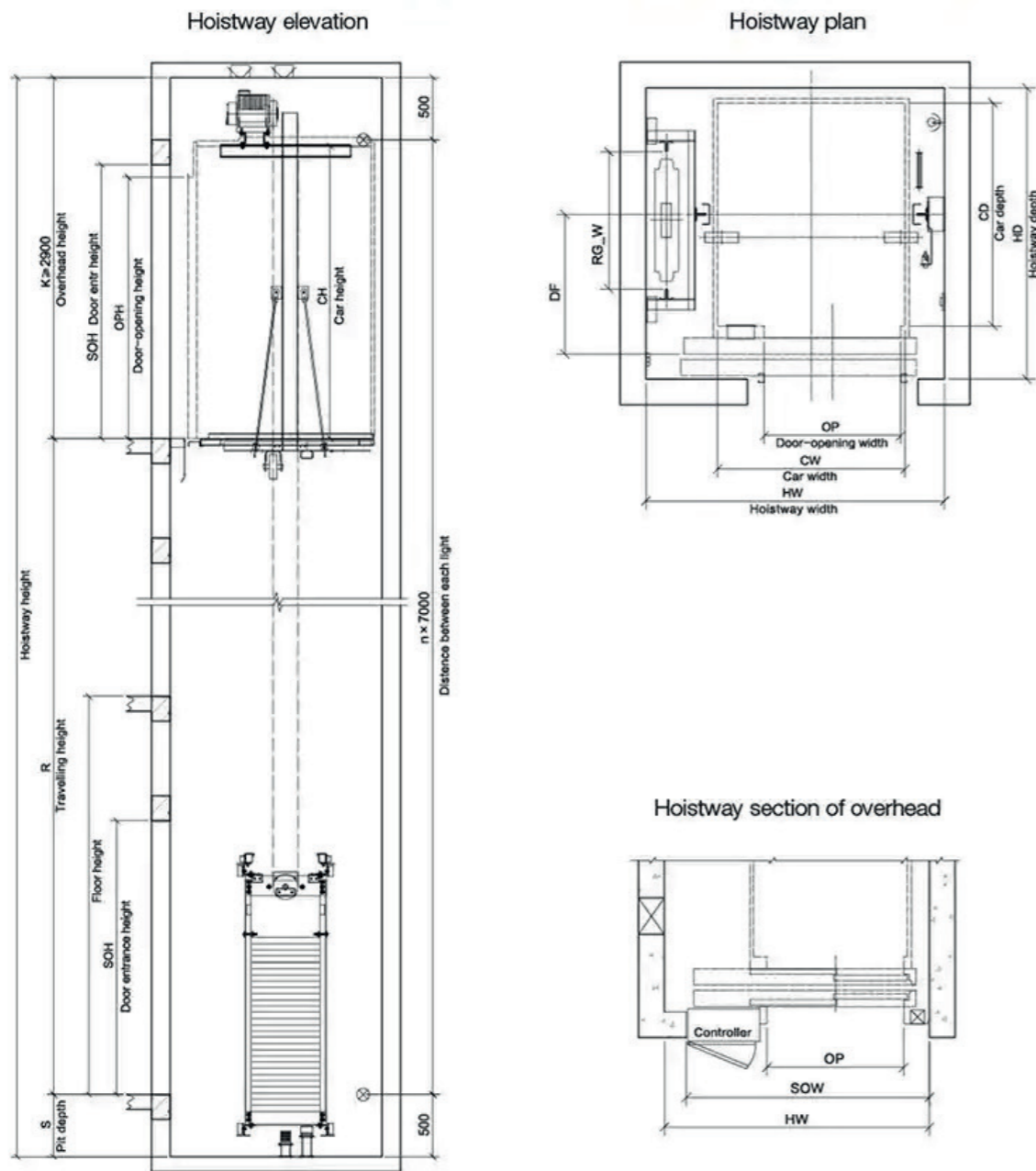
## Machine Room Type Panoramic Elevator



Load (kg)	Speed (m/s)	Net dimension of car (mm)					Net dimension of hoistway (mm)					Net dimension of machine room (mm)			Maximum floor	Maximum travelling (m)			
		Width	Depth	Height	Door open width	Door open height	Width	Depth	Gate width	Gate height	Pit	Over head	Width	Depth			Height		
800	1.0	1250	1700	2500	800	2100	2250	2250	1000	2200	1950	4400	2250	3600	2700	16	50		
	1.5															2000	4550	25	80
	1.75															2050	4600	30	90
1000	1.0	1400	1800	2500	900	2100	2400	2350	1100	2200	1950	4400	2400	3700	2700	16	50		
	1.5															2000	4550	25	80
	1.75															2050	4600	30	90
1150	1.0	1400	2000	2500	900	2100	2400	2550	1100	2200	1950	4400	2400	3900	2700	16	50		
	1.5															2000	4550	25	80
	1.75															2050	4600	30	90
1350	1.0	1600	2000	2500	900	2100	2500	2550	1100	2200	1950	4400	2500	3900	2700	16	50		
	1.5															2000	4550	25	80
	1.75															2050	4600	30	90
1600	1.0	1600	2250	2500	900	2100	2500	2800	1100	2200	1950	4400	2500	4000	2700	16	50		
	1.5															2000	4550	25	80
	1.75															2050	4600	30	90

Note: Only for reference, final manufacture please follow contract.

# Machine Room Type Home Elevator



Load (kg)	Speed (m/s)	Net dimension of car (mm)					Net dimension of hoistway (mm)					Maximum floor	Maximum travelling (m)	
		Width	Depth	Height	Door open width	Door open height	Width	Depth	Gate width	Gate height	Pit			Over head
225	0.4	900	1100	2300	800	2100	1550	1500	1000	2200	≥ 500	≥ 2900	5	12
320	0.4	1000	1200				1650	1600						
400	0.4	1100	1300				1750	1700						

Note: Only for reference, final manufacture please follow contract.

## Customer Service Center

We deliver end-to-end service throughout the entire project lifecycle. Dedicated account managers ensure proactive communication and a deep understanding of your needs, enabling us to provide refined, responsive support. Our commitment includes a program of regular operational status reviews to guarantee your equipment's continuous optimal performance.



## Intelligent IoT Platform

Fuji Industry Elevator's intelligent IoT platform leverages cutting-edge technology and our vast repository of maintenance data to revolutionize elevator service. We provide unparalleled, data-driven intelligence for our clients and a smarter experience for passengers.

- 24/7 real-time online monitoring
- Highly transparent maintenance services
- Quick response to elevator failure
- Elevator Early-Warning and Intervention System

